

TAR HEEL



ROCKHOUND

MAY 2013

CATAWBA VALLEY GEM & MINERAL CLUB, INC.

2013 OFFICERS AND COMMITTEES

President:	Norma Ridenhour 828-397-6355	Editor:	Velda McLean 828-572-1826	Show Chairmen:	Baxter Leonard 828-320-4028
Vice President:	Joan Glover 828-324-0707	Field Trip:	Harry Polly 828-728-9553		Eric Fritz 828-495-7031
Treasurer:	Terry Russell 828-330-0034	Education:	George Max 828-328-9107	Scholarship:	George Max 828-328-9107
Secretary:	Dean Russell 828-330-0034		Bob Tallent 828-851-8434		

Club Address: PO Box 2521, Hickory, NC 28603-2521
Regular Meetings: Second Tuesday, 7:00 PM
St Aloysius Catholic Church
921 2nd St NE Hickory, NC
Annual Dues: Family, \$18; Individual, \$12; Junior, \$6

The purpose of the Club is to increase the individual's knowledge of the earth sciences and to aid in the development of lapidary and related arts and skills; to promote fellowship and exchange of ideas; to hold exhibitions, contests, lectures and demonstrations for educational purposes; to help interest more people in the gem and mineral hobby; and to capture and preserve the beauty of nature, the arts, and the works of man.

SHOW REVIEW 6:00 PM

Baxter Leonard, Show Chairmen

There will be a show review/critique meeting on Tuesday May 14, 2013 at 6PM before our regular meeting at the church. Since our show was very successful, I would not think any major changes are needed, but it does not hurt to make whatever adjustments felt necessary by club members. All show participants as well as all club members are welcomed.

The meeting should not last more than 45 minutes, so that President Norma Ridenhour will have a chance to start the regular meeting promptly at 7 PM. If anyone is unable to attend, feel free to let me know of your ideas.

Also, it is not too early to think about a central theme/special exhibit for the 2014 show.

INSIDE

President's Message-----	2
Minutes-----	2
May Program-----	3
News from the Treasurer-----	3
EFMLS Annual Convention-----	3
May Field Trip-----	3
April Field Trip Photos-----	4
Wonderful Wildacres-----	5

CATAWBA VALLEY
GEM & MINERAL CLUB, INC.

Website:

<http://www.cvgmc.com/>

Web Master: Mike Streeter

Velda L McLean, Editor
3484 Coy Miller Road
Lenoir, NC 28645
velda3484@charter.net

PRESIDENT'S MESSAGE

Norma Ridenhour, Club President

It has been a busy month with my mother in the hospital, in rehab, back to the hospital and back to rehab. However I did manage to get in a mini vacation in Sapphire Valley. After exploring Franklin and the waterfalls, I introduced my best friend to gem mining. I do not like enriched buckets, so I dug my own. My friend went with an enriched bucket. This time I think she had the right idea. I only came up with one decent sapphire and she had an assortment of sapphires, rubies, and other stones. Oh well, it was fun anyway.

Norma

CATAWBA VALLEY GEM AND MINERAL CLUB, INC.

Minutes for April 9, 2013

The April 9, 2013 meeting of the CVGMC was called to order by President Norma Ridenhour at 7:00 PM. There were 33 members and visitors present. After corrections to the March minutes that it was Warren Hollar (not Wayne) and Propst Farm (not Probst), a motion was made by Harry Polly and seconded by Larry Huffman to accept the March minutes. Motion was passed by the club.

Program: Jeff Schlottman did a presentation on "Timeless Impressions" Arizona Petrified Wood.

Treasurer Report: Terry Russell reported on the checkbook balance and the finances of the 2013 Club Show.

Field Trip Report:

1. April 13th field trip will be to Propst Farm, Harry Polly will send out information of the trip.
2. The May 18th field trip will be to the Presnell Mine.
3. Also discussed was the club field trip to Kentucky to collect geodes August 30 – September 2, 2013 (Labor Day weekend). Ann Koebberling has made arrangements for the club to collect.
4. Norma Ridenhour asked the members if anyone was interested in a possible cave field trip.

Education Committee: None

Show Committee: A 2013 show review will be done before the May 14th meeting.

1. Baxter Leonard thanked the club members for their contributions to make the show work.
2. Baxter Leonard also presented award plaques to:
 - a. Richard and Shelda Altman for their fossil display and the work they put into teaching the students and Scouts.
 - b. Warren Hollar for his guidance with organizing the school day and the Scouts.

3. Eric Fritz reported that:

- a. There were no negative comments from the dealers.
- b. A black opal pendant was purchased for next year's grand prize.
- c. Dudley Shoals and East Burke Middle schools were given a CVMGC mineral case each.
- d. The new case with the Isaac collection at the show is now at the Catawba Science Center.
- e. An assistant show chairman is needed for the 2014 Show.

New Members: Ron & Brenda Hamby, Jason Hamby, and Jody Clark.

New Business:

1. Wayne Bowman mentioned that Anna Christina is having an art show April 13th at 4 PM at her studio.
2. Catawba Science Center would like an interactive ("hands on") exhibit by the club.
3. The group from P.A.R.I. attended the show, was very impressed and would like an exhibit also. Norma Ridenhour suggested, because of the distance from Hickory, that club members should check it out to see if it would be worth the effort.
4. Joan Glover reported that St. Stephan's Library would like a program.
5. Eric Fritz discussed the Ken and Brenda Issac Collection. He reported that some of the minerals were sold at the show and Eric Fritz, seconded by Wayne Bowman made the motion to take the funds and create the Ken and Brenda Issac Education Fund. The motion was passed by the club membership.
6. Eric Fritz seconded by Harry Polly, made the motion to give Ken and Brenda Issac Honorary Member status. The motion was passed by the club membership.
7. Richard Altman thanked Eric Fritz for all his behind the scenes work for the club.
8. The Eastern Federation meeting is May 31 to June 3, 2014 on Long Island.
9. Norma Ridenhour mentioned Lloyd Hoke's book "A Rock for Ambrose"
10. Rick Glover requested members to collect minerals for the "hands on" table for next year's show.
11. Megan Russell requested that members save baby food jars for the kid's corner at next year's show.

Old Business: None

Closing of Business: The meeting adjourned at 8:45 PM

Respectfully submitted,

Dean Russell, Secretary

MAY PROGRAM

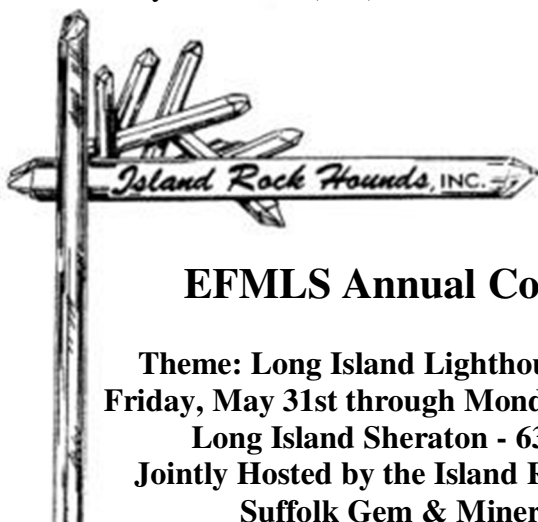
Joan Glover, Program Director

The program this month is "Rock Hounding Poetry" by Glen Bolick in conjunction with "Local Hidden Treasures" by Warren Hollar.

NEWS FROM THE TREASURER

Terry Russell, Club Treasurer

In order to make record keeping easier, the treasurer has created a form to be used when submitting expenses for reimbursement. All expenses have to be itemized on the form with the amount, the Vendor name and the description of the expense (this helps to determine how to categorize each item). Once the form has been completed it should be given to the treasurer to be reviewed after the monthly meeting. After the board members sign the form, the treasurer will write a check and mail it to the person requesting reimbursement within a week. If you have any questions, please contact Terry Russell at (828) 330-0034.



EFMLS Annual Convention

Theme: Long Island Lighthouses & Geology
Friday, May 31st through Monday June 3rd 2013
Long Island Sheraton - 631.231.1100
Jointly Hosted by the Island Rock Hounds & Suffolk Gem & Mineral Club

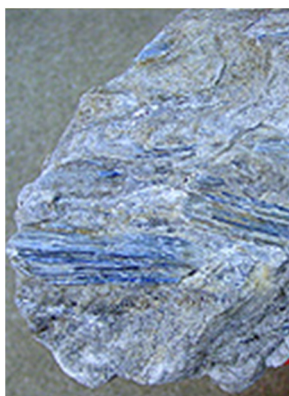


MAY FIELD TRIP

Harry Polly, Field Trip Chairman

The May field trip for the Catawba Valley Gem & Mineral Club will be held May 18th. We will be going to the Presnell mine for kyanite. We will meet at 8:00 am in the parking lot of the Waffle House off of I-40, at exit 100, Jamestown Road. You will need digging tools, crack hammer, chisels. A probing tool is handy. Bring food and drink and raingear. There are no facilities and no fee. Call me if you have any questions. My cell is 828-244-6651. For those that may come later I am adding directions.

Harry



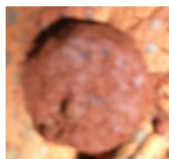
DIRECTIONS TO PRESNELL KYANITE MINE

Take I-40 West to Exit 86 (NC Hwy 226). Take a right on NC226 for 5.8 miles to Hwy US70. This is the stoplight at Wal-Mart. Take a left on US70 for 1.8 miles to NC Hwy 80. This is the third stoplight. Take a right on NC Hwy 80 for 17.5 miles. You will pass the U.S. Forestry Service Campground, Carolina Hemlock, go across a bridge, and stop at a convenience store with an Amoco sign. Store is only about a hundred yards from the bridge. Stop here to regroup and use restroom. **LAST CHANCE TILL RETURN!!!**

When we leave the store, take a left on Colbert Creek Rd. This road is directly across from the store and goes up a hill. Go 0.7 miles to intersection. Take a right and go 0.5 miles to a small one-lane bridge. Cross the bridge and take a right onto the gravel road. Aptly named Kyanite Drive. The road splits several times, but keep to the right and follow it for 0.2 miles to Mr. Presnell's home. **VERY STEEP DRIVEWAY.** Park in the uppermost part of the driveway, but do not block anything.

The mine is located on the hill behind his house. Walk up the upper driveway towards the house. Take the steps up through his garden to the trail above. Follow the trail to the left. You will see the diggings in the bank. The large boulders are on the hillside above. They are very hard to find. You will walk all over them before you find them. They are about 20 yards above the trail. Digging in the bank or around the trees is easier and more productive than trying to bust that boulder. **Call before you go:** Mr. Lowell T. Presnell, 828-675-4659.

CCGMC APRIL 2013 FIELD TRIP--PROPST FARM FOR SAPPHIRES



WONDERFUL WILDACRES

Steve Weinberger, WA Committee Chair

As I write this, the thermometer on our deck tells me that it's 24° and the calendar says that it's spring. As I look out the window here in the Drainage Basin of the Patapsco where I live I see robins searching for worms with frost on their wings. Wearing a winter coat in early April is not exactly my cup of tea.

Tea reminds me that in a few days I'll be spending a pleasant week with our friend Bob Jones - a consummate tea drinker - at the spring session of our EFMLS Wildacres Workshop. And even if the temperatures there in the mountains are a bit chilly at night, the warmth of the friendships made at Wildacres are more than enough to warm the spirits.

Not yet been to Wildacres? What are you waiting for? Our EFMLS Wildacres Workshops are unique - a wonderful way to spend a week in the mountains away from the hustle and bustle of our usual hectic city life. No honking trucks or cars, no raucous radios blaring, no smog...just the clean mountain air, sounds of nature and the laughter and avid discussions of participants engaged in having fun, creating new treasures and learning new skills.

The September session of EFMLS Wildacres will run from September 2 - 8. For this session we'll have a tag-team of Speakers-in-Residence -- Quintin and Willow Wight. He's author of "The Complete Book of Micromounting" and is very knowledgeable about minerals, especially those found at Mt. St. Hilaire in Quebec, Canada. She's a gem expert who represents Canada at international gem conferences around the world. Together they'll present talks on a wide variety of subjects -- minerals, gems and travel to places they've visited.



A large part of any Wildacres session are the classes being offered. For the fall session, Director Fran Sick has once again assembled a terrific faculty of instructors who will offer the following classes.

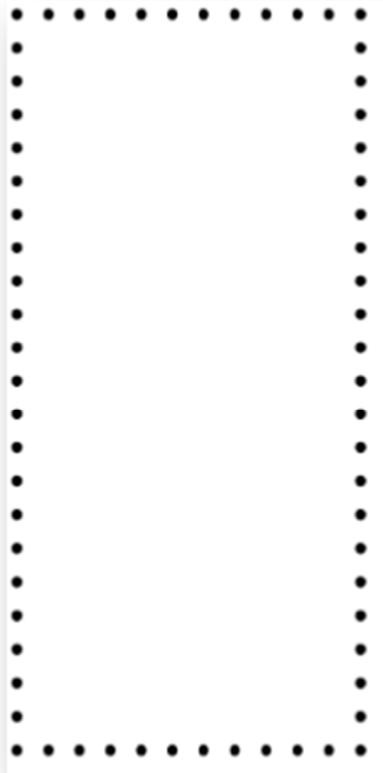
Beading taught by Cheryl Brown
Cabochons taught by John Milligan
Cold Connections with Pat Baker
Reactive Metals also taught by Pat Baker
Faceting with Steve Weinberger
Intarsia with Richard Shackleton
Scrimshaw with Sandra Brady
Silversmithing with Marge Collins
Stained Glass with Connie Johnson

So what are you waiting for? Visit the EFMLS Wildacres web site (www.amfed.org/efmls) and click on the Wildacres tab to learn more. You can read about Quintin and Willow, get full descriptions of the classes and find an application form right there on the web site.

I look forward to meeting many of you this fall at Wildacres. We love to have "new people" experience for themselves the magic and fun of an EFMLS Wildacres Workshop.

Now, I'm going to decide what kind of tea I'm going to drink with Bob Jones during our spring session!

First Class Mail



Tar Heel Rockhound
Velda McLean, Editor
Post Office Box 2521
Hickory, North Carolina 28603-2521
<http://www.cvgmc.com/>



TAR HEEL ROCKHOUND

Official Publication of
**Catawba Valley
Gem and Mineral Club, Inc.**

Volume 42 Number 5

Club Meeting

**Tuesday
May 15, 2013**

Show Review

6:00 PM

Regular Meeting

7:00 PM

**St Aloysius Catholic Church
921 2nd St NE
Hickory, NC**