

TAR HEEL



ROCKHOUND

FEBRUARY 2014

CATAWBA VALLEY GEM & MINERAL CLUB, INC.

2014 OFFICERS AND COMMITTEES

President:	Norma Ridenhour 828-397-6355	Editor:	Velda McLean 828-572-1826	Show Chairmen:	Baxter Leonard 828-320-4028
Vice President:	Rick Glover 828-324-0707	Field Trip:	Harry Polly 828-728-9553		George Max 828-328-9107
Treasurer:	Terry Russell 828-303-1563	Education:	George Max 828-328-9107	Scholarship:	George Max 828-328-9107
Secretary:	Dean Russell 828-303-1448		Bob Tallent 828-851-8434	Eastern Federation Liaison:	Larry Huffman 828-612-4469

Club Address: PO Box 2521, Hickory, NC 28603-2521

Regular Meetings: Second Tuesday, 7:00 PM

St Aloysius Catholic Church

921 2nd St NE Hickory, NC

Annual Dues: Family, \$18; Individual, \$12; Junior, \$6

The purpose of the Club is to increase the individual's knowledge of the earth sciences and to aid in the development of lapidary and related arts and skills; to promote fellowship and exchange of ideas; to hold exhibitions, contests, lectures and demonstrations for educational purposes; to help interest more people in the gem and mineral hobby; and to capture and preserve the beauty of nature, the arts, and the works of man.

FEBRUARY PROGRAM

SHOW & TELL

Rick Glover, Program Director

Members are encouraged to share with the club stories of their favorite or most exciting collecting sites. They are also encouraged to bring samples to show all of us.

Tell us about your treasures and any adventures in getting them.



CATAWBA VALLEY
GEM & MINERAL CLUB, INC.

<http://www.cvgmc.com/>

Web Master: Mike Streeter

INSIDE

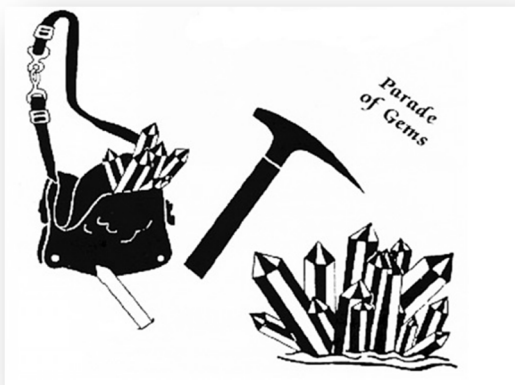
President's Message-----	2
Minutes-----	2
Field Trip News-----	2
Bragging Rock Winners-----	3
Other Entries -----	3
Baby It's Cold Outside/Wildacres--	4
2014 EFMLS Annual Show-----	4
Last Call for Member Renewal-----	4
Mini Miners Monthly-----	5

Velda L McLean, Editor
3484 Coy Miller Road
Lenoir, NC 28645
velda3484@charter.net

PRESIDENT'S MESSAGE

Norma Ridenhour, Club President

We are getting closer to the time for our yearly show. There have been a lot of behind the scene work to make sure everything runs smoothly.



If you haven't volunteered to help, see Baxter Leonard. It will take everyone to make it a successful show.

Norma

CATAWBA VALLEY GEM AND MINERAL CLUB, INC.

Minutes for January 14, 2014

The January 14, 2014 meeting of the CVGMC was called to order by President Norma Ridenhour at 7:00 PM. There were 31 members and visitors present.

A motion was made by Harry Polly and seconded by Rick Glover to accept the November minutes after the correction to the Glenn Bolick note. Motion was passed by the Club.

Treasurer Report: Auction totals were reported.

Field Trip Report: Reel Mine field trip was in December. Grab Bags will be in January.

Education Committee: None

Show Committee: Vendors are full. Advertising was sent out. Ticket sales help is needed.

Old Business: None

New Business: Baby food jars are needed for the Show. Please call Megan Sims if you have any available. Contact the secretary for Megan's phone number.

Richard Sipe offered soap stone to Club members.

Sympathy was expressed to Gloria Sigmon for the loss of her daughter.

Shield Museum – February 22, 2014 – are looking for people to display or sell.

Tom Underwood Lapidary Equipment is for sale. Call 828-303-8238 for information.

Closing of Business: The meeting was adjourned at 7:25 PM.

Program: Annual Bragging Rock Contest was the program.

Best Self Collected – Ryan Sims
Best Self Purchased – Betty Hollar
Best Self Crafted – Brenda Huffman

Respectfully submitted,
Dean Russell, Secretary

FIELD TRIP NEWS

Harry Polly, Field Trip Coordinator



As February comes, so do the field trips again. As in the past, we have historically gone to the Bowers Farm for limonite. This year will be no exception. After repeatedly trying to get hold of someone in the Bowers family to make arrangements with and having no success, I was about to write this location off as being closed. Dean Russell and I drove down to Norwood to make some inquiries about the location. I had remembered that someone of Mr. Bowers' kin worked at a convenience store close to the location. When we inquired there, one of the ladies called the daughter-in-law of Mr. Bowers. I spoke with her, got all names and phone numbers to contact. That being said, our field trip for February will be to that location.

The February field trip will be February 15th to Bowers Farm for limonite pseudomorph after pyrite. We will meet in the parking lot of Roses' at 8:00 am. This is located on Hwy 70E just to the west of the intersection of I-40/Hwy 321. Coming from the north on Hwy 321, take the Hildebran exit, Roses' will be on your left as you exit. Coming from the west on I-40, take exit 123 towards Hickory on Hwy 321. At the intersection of Hwy 70, turn left, cross over the bridge and Roses' will be on your left. We will be travelling south on Hwy 321, so anyone south of Hickory can call me or e-mail me for hookup time and place, possibly Hwy 10 or Startown Road. Any one that knows the way and wants to meet us there may let me know.

Harry

BRAGGING ROCK CONTEST WINNERS

Rick Glover, Program Director

BEST SELF COLLECTED FOR 2013

Window Pane Calcite in Matrix, Ryan Simes



BEST SELF PURCHASED FOR 2013

Opal Pendant, Betty Hollar

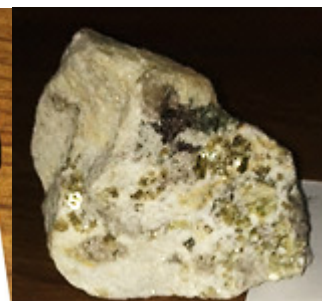
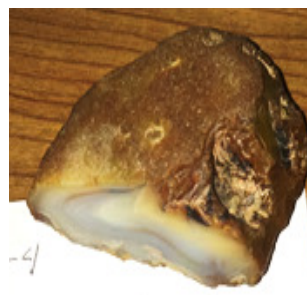


BEST SELF CRAFTED FOR 201

Rhodonite Earrings, Brenda Huffman



OTHER ENTRIES



"BABY, IT'S COLD OUTSIDE"

Steve Weinberger, EFMLS Wildacres Committee Chair



Need something to cheer you up as you cope with the snow, sleet and sub-par temperatures that are gripping the country right now? For me, I get relief just thinking about spring and the opportunity to "get away from it all" by attending EFMLS

Wildacres. The memories of past sessions in this wonderful place are enough to warm my spirits...and I hope yours as you plan your spring getaway. Why not come to the mountains of North Carolina?

The dates for our EFMLS Wildacres Workshops are set – April 7 -13 and September 2-7, the speakers engaged (Leonard Himes in spring and Justin Zyzzyx in fall), and classes announced. All we need to make the session complete is YOU!

A list of available classes is listed elsewhere in the issue of January 2014 *ELMLS News* (pages 7 and 8 and a registration form is on page 10) <http://www.amfed.org/EFMLS/>. What could be more convenient!



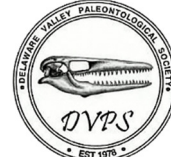
The fee for the week - room, board and enrollment in one or two classes - is \$390 per person. Where else can you go for a week of instruction and fun for that incredible fee?

I look forward to seeing you this year at an EFMLS Wildacres Workshop. Find out for yourself why so many people return year after year and count the days between sessions.

You can find out more about EFMLS Wildacres by visiting the website efmls-wildacres.org/.

EFMLS News -- January, 2014

MINERAL TREASURES + FOSSIL FAIR 2014 ANNUAL SHOW



WITH THE EASTERN FEDERATION OF MINERALOGICAL & LAPIDARY SOCIETIES' ANNUAL CONVENTION, FEATURING FIELD TRIPS AND AN AUCTION

The Philadelphia Mineralogical Society and the Delaware Valley Paleontological Society present a joint show and sale at the

LuLu Temple, 5140 Butler Pike, in Plymouth Meeting PA.
Just 2 miles from the Norristown exit of the PA Turnpike!

Saturday, Mar. 29, 10 am – 5 pm

Sunday, Mar. 30, 10 am – 4 pm

Special Exhibit by the Academy of Natural Sciences

Fossils, Minerals, Gems, Speakers, and Exhibits!

Learning Activities include a Fossil Dig and a Kid's Mineral Corner

Also—Food, Door Prizes throughout the days, and Scouting Merit Badge information.

\$5.00 admission; \$1.00 kids under 12.

All uniformed Scouts are free.

Information: www.philameneralsociety.org

LAST CALL FOR MEMBER RENEWAL



Treasurer Terry Russell will be purging the membership by the end of February in order to turn in an accurate membership count for our EFMLS dues by March 1, 2014. These federation dues provide our insurance covering field trips. Help her by sending an updated membership form with your dues.

MINI MINERS MONTHLY

Vol. 7 No. 12

A Monthly Publication for Young Mineral Collectors

December 2013

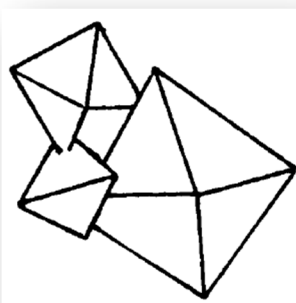


Fool's Gold Pyrite



Mineral Trivia

It might look like gold, but don't be fooled! Many prospectors ran off to the bank thinking they had struck it rich in gold only to learn they had struck pyrite. They were fooled by "fool's gold."



Pyrite from Peru

the same crystal system. This means they both can form cubes and octahedra (that is, diamond-shaped crystals).

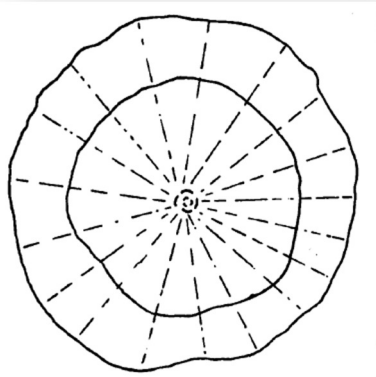
Pyrite and gold are similar in one way: They crystallize in



Gold from Russia

You don't have to be fooled, though, because fool's gold and real gold are very different from one another.

Pyrite disc
(commonly called
"Pyrite Sun") from
Illinois.



Some _____ crystals are so thin, you can see through them.

_____ is unique because it has two different hardnesses in one crystal.

_____ has the element *strontium* in it, which is used to make bright red fireworks.

The name of this mineral means *heavy*. The mineral is _____.

_____ is very valuable. It is also *ductile* which means it can be stretched into long, thin wires.

_____ is also known as "Fool's Gold."

_____ is an important source of uranium for nuclear reactors.

_____ is used to make porcelain.

_____ is the mineral name for nature's magnet.

_____ can form huge crystals, some as big as 600 pounds.

_____ is an ore of the metal called *lead*.

_____ is the hardest substance on Earth.

_____ is the green variety of the mineral *beryl*.

_____ is named from a Greek word which means *blood*.

_____ is the mineral name for *salt*.

_____ is used in photography and jewelry.

_____ usually grows in rounded masses that look like a bunch of grapes.

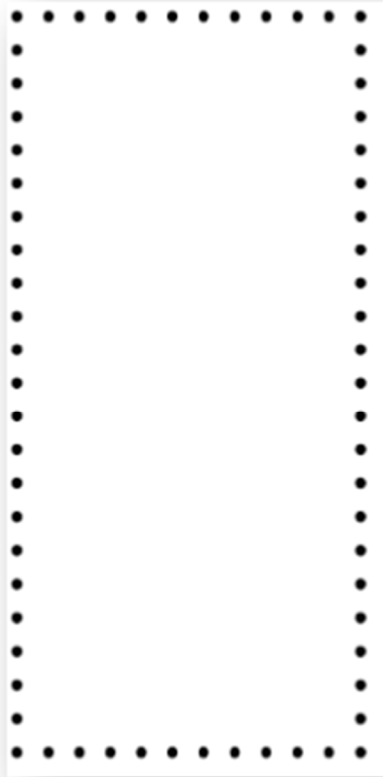
_____ is the mineral name for "Television Stone."

Choose from the following minerals . . .

Barite, Celestite, Diamond, Emerald, Galena, Gold, Halite, Hematite, Kyanite, Magnetite, Orthoclase, Pyrite, Silver, Smithsonite, Topaz, Ulexite, Uraninite, Wulfenite.

First Class Mail

Tar Heel Rockhound
Velda McLean, Editor
Post Office Box 2521
Hickory, North Carolina 28603-2521
<http://www.cvgmc.com/>



TAR HEEL ROCKHOUND

Official Publication of

**Catawba Valley
Gem and Mineral Club, Inc.**

Volume 43 Number 2

Club Meeting

**Tuesday
February 11, 2014**

**St Aloysius Catholic Church
921 2nd St NE
Hickory, NC**