

TAR HEEL



ROCKHOUND

FEBRUARY 2011

## CATAWBA VALLEY GEM & MINERAL CLUB, INC.

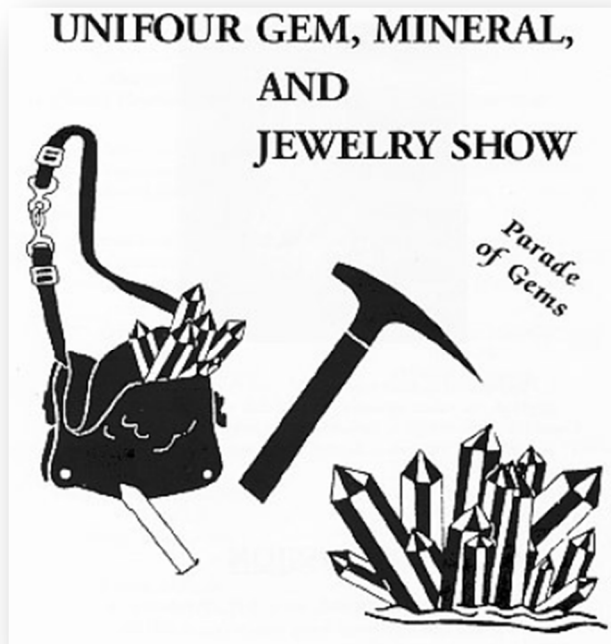
### 2011 OFFICERS AND COMMITTEES

President:	Baxter Leonard 828-328-2231	Editor:	Velda McLean 828-750-4213	Show Chairmen:	George Max 828-328-9107
Vice President:	Lloyd Hoke 828-256-2466	Field Trip:	Harry Polly 828-728-9553		Eric Fritz 828-495-7031
Treasurer:	Zan Ritchie 828-495-8456	Education:	Glenn Bolick	Scholarship:	George Max 828-328-9107
Secretary:	Dean Russell 828-330-0034				

Club Address: PO Box 2521, Hickory, NC 28603-2521  
Regular Meetings: Second Tuesday, 7:00 PM  
St Aloysius Catholic Church  
921 2nd St NE Hickory, NC  
Annual Dues: Family, \$18; Individual, \$12; Junior, \$6

The purpose of the Club is to increase the individual's knowledge of the earth sciences and to aid in the development of lapidary and related arts and skills; to promote fellowship and exchange of ideas; to hold exhibitions, contests, lectures and demonstrations for educational purposes; to help interest more people in the gem and mineral hobby; and to capture and preserve the beauty of nature, the arts, and the works of man.

### GET READY FOR IT!!!



### INSIDE

President's Message-----	2
February Program-----	2
Minutes-----	2
February Field Trip-----	3
Grab Bags-----	3
Last Warning!-----	3
Gem Show-----	3
Free Admission (to volunteers)-----	3
Linda Moser-----	4
"Penny" McDermott-----	4
Did You "Due" it Yet?-----	4
Wildacres-----	4
Mini Miners Monthly-----	5
CVGMC Demonstrations-----	5

Velda L McLean  
3121 Blue Creek Road  
Lenoir, NC 28645  
[velda@email.com](mailto:velda@email.com)

## PRESIDENT'S MESSAGE

Baxter Leonard, Club President

Generosity comes in different forms and I've recently witnessed several examples. A person may donate material objects for others to enjoy and minutes of January 11 meeting reflect this. Kenny Isaac and his wife donated many superb mineral specimens to CVGMC so that others could enjoy their beauty and appreciate what nature offers. The persons who were generous and giving of their time to assemble grab bags on January 15 showed a different form of generosity-their free time. And as the February meeting's program, a third form of generosity will be shown when our guest demonstrates his generosity by sharing his knowledge with us.

I encourage all members of CVGMC to be generous when the opportunity presents itself-material items, time, and knowledge. Truly, the benefits of giving outweigh those of receiving.

**Baxter Leonard**

## FEBRUARY PROGRAM

Lloyd Hoke, Program Chair



Bruce Beerbower, Director of Visitor Services at The Science Center, will give a program on Mt. St. Helens eruption and geological associated events for our February meeting.

Since only seven members were present for our January meeting, the Bragging Rock Contest was postponed until our April meeting

**Lloyd Hoke**

## CATAWBA VALLEY GEM AND MINERAL CLUB, INC.

### Minutes, January 11, 2011

The January 2011 meeting of the CVGMC was called to order by President Baxter Leonard at 7:00 PM. There were 7 members who braved the wintery conditions present. The minutes of the December 2010 meeting were read and approved with only a correction to Baxter Leonard's phone number.

**Treasurer Report:** Zan Ritchie reported by email that the checkbook balance as of 12/31/2010 was \$13399.95. The auction netted \$1086. Laptop and software was delivered to Newsletter Editor, Velda McLean, for \$606.52. A reminder to Club members to pay your dues and provide a membership form by February 28, 2010, or you will no longer be a member of the Club. Mail form and check to Club's address (on forms, in newsletter).

**Field Trip Report:** January field trip will be Grab Bag packing at Lenior-Rhyne University on Saturday, January 15<sup>th</sup> at 9:00 AM.

**Show Committee:** George Max reported the he will get the insurance rider to cover the Hickory Metro Convention Center (HMCC) employees at the show. George will pick up the bags for the Grab Bags. Brochures for the show will be available at the next meeting. A *Rhodochrosite*, donated by Kenny Isaac will be used as a prize at the show.

**Unfinished Business:** None.

**New Business:** President Baxter Leonard wanted to thank Eric Fritz for the great job he did as auctioneer for the December meeting. Also to all the Club members who brought food and the minerals for the auction.

He also recognized George Matthews for his donation of a slide projector to the Club, Rusty Hill for his donation of flats of minerals for the grab bags, and Kenny Isaac for his donation of 14 minerals to the Club, which will be used in a display case at the show.

President Baxter Leonard discussed the donation of the Club's 8 foot tables to the HMCC. There are approximately 45-48 tables that the Club stores and uses only for the yearly show. There is much labor involved, by the Club members, in moving the tables to the HMCC, setting them up and then taking them down and taking back to the trailer. By transferring ownership to the HMCC, the rent and set-up fees in the future would be waived. Baxter did a phone/email poll of the Club Board of Directors, who approved the idea to put the transfer of ownership of the tables to the HMCC up for a vote to the Club membership. A quorum was not present tonight, so the vote was to be presented at the February meeting.

Various Club members are going to donate their time and knowledge on Saturday, February 26<sup>th</sup> at the Catawba Science Center from 11 AM – 3 PM.

**Announcements:** The February meeting's speaker will be Bruce Beerbower. He will talk about Mount St. Helens.

The **Bragging Rock Contest** will be moved to the April meeting.

**Closing of Business:** The meeting adjourned at 7:30 PM

Respectfully submitted,  
Dean Russell, Secretary

## FEBRUARY FIELD TRIP

Harry Polly, Field Trip Coordinator

The February field trip of the Catawba Valley Gem & Mineral Club will be held on February 12th. We will be travelling to Stanly County for limonite. We will meet in the Rose's parking lot on Hwy 70 East at 8:00 am. We will travel to the town of Norwood to the Bower's Farm to collect. There is a \$5.00 digging fee. There is short walk-in of about 1/4 mile on a wooded trail. This trail has uphill and downhill of moderate grade. You will need to bring digging tools, i.e. mattock, shovel, scratching tools, food & water, warm clothes and raingear. There are no facilities. Those living on the south and east of Hickory may wish to meet at a more convenient place. Please e-mail or call me for suggestion of places.

[pollysrock@yahoo.com](mailto:pollysrock@yahoo.com)  
828-244-6651 (cell)



**Harry**

## GRAB BAGS

George Max, Show Chairman

We had 13 people at the grab bag packing "field trip". In just two hours we packed over 500 grab bags and we had a variety of different kinds of rocks, shells, crystals and tumble stones. We then stored the bags so they will be ready for the show in March. I was inspired by and thankful for the work done by everyone.



## LAST WARNING!

### Don't Get Dropped Dues are Due

Dues are payable before the end of February. Send a check and member's information form to Treasurer Zan Ritchie at Box 2521, Hickory 28603, or you will be dropped from the club rolls.

**Don't let this be your last newsletter!** Questions? Call Zan at (828) 495-8456 or email [alexanderritchie@msn.com](mailto:alexanderritchie@msn.com).



## GEM SHOW

George Max, Chairman

### 41<sup>st</sup> Annual Gem, Mineral, Fossil and Jewelry Show March 18-20<sup>th</sup> Hickory Metro Convention Center

On March 18-20th we will have our **41<sup>st</sup> Annual Gem, Mineral, Fossil and Jewelry Show** at the Hickory Metro Convention Center. It is our opportunity to exhibit, demonstrate lapidary skills, share information, encourage interest in the hobby as well as make purchases from the dealers. We will have an exhibit from the Smithsonian Institution and exhibit of museum quality minerals recently donated to the club by a loyal club member. We encourage others to exhibit as well (see our web site for forms). We do need to know the size case you plan to use.



The Show Committee needs help with the show set up/take down, grab bag and ticket sales, demonstrations and kids' corner. This will be your opportunity to meet the Hickory Metro Convention Center service requirement for club members who wish free admission to the show. Signup sheets will be available at the February meeting. If you are not present at the meeting then you may call the show chairman at 828-328-9107 or email at [max@lr.edu](mailto:max@lr.edu).

### FREE ADMISSION TO GEM SHOW!!! (If you volunteer to help with the show!)



Have you heard that the Catawba Valley Gem and Mineral Club is adopting a practice used in other Gem Clubs regarding free admission to the show? At the October meeting, the club passed a motion that any club member wishing to attend the show free would have to volunteer at the show in some capacity (including exhibiting and packing grab bags). It takes many helping hands to bring about a successful show, so your helping hands will be rewarded with free admission to the show! There will be opportunity at the February meeting to sign up to help with set up, take down, grab bag sales, ticket sales, demonstrations, and kids' corner.

If you will not be attending the meeting, you may e-mail George Max ([max@lr.edu](mailto:max@lr.edu)) or, for ticket sales, Marilyn Max ([maxmahickory@juno.com](mailto:maxmahickory@juno.com)) or call them at 828-328-9107.

LINDA FAYE ALLRED MOSER  
July 12th, 1948 - January 25th, 2011



Linda Moser will be missed by the Catawba Valley Gem & Mineral Club. She was also a member of the Western Piedmont Mineral and Gem Society where she served as secretary and editor. She was also the Show Chairman of the Hiddenite Gem and Mineral Show.

Condolences may be sent to Moser family at [www.drumfuneralhome.com](http://www.drumfuneralhome.com).

### "PENNY" HYMAN MCDERMOTT

Betty Hollar's mother, Penelope "Penny" Hyman McDermott, 84, of Hickory, passed away on Wednesday, Jan. 12, 2011.

She enjoyed planting flowers, needlepoint, and was an avid sports fan.

Online condolences may be left for the family at [www.bass-smithfuneralhome.com](http://www.bass-smithfuneralhome.com).



### DID YOU "DUE" IT YET?

from Carolyn Weinberger, Directory Editor  
& Loud Budell, Treasurer

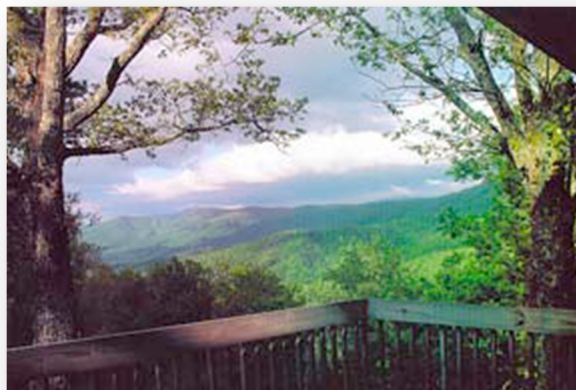
EFMLS dues for 2011 should have been submitted by the time you read these lines. Remember that if your club has not submitted their dues and information by March 1, your club will lose its membership in EFMLS and with it your right to hold EFMLS insurance, borrow programs from the library etc. We would truly hate to lose you!

**EFMLS News -- February, 2011**



### COME AND PLAY IN OUR SANDBOX!

by Steve Weinberger,  
Wildacres Workshop Committee Chair



Many of us have fond memories of our childhood days playing in a sandbox or on the playground with friends. WetinkeredwithErector® Sets, Lincoln Logs®, cars, play kitchens etc. Chronologically, we're probably a bit old to still play in the sandbox although many of us still build sand castles at the beach and "play" in the kitchen. Our interests have broadened to include hobbies like gem cutting, jewelry fabrication and mineral collecting. And we're definitely not too old to play and learn new skills.

I'd like to invite you to come and play in the EFMLS "sandbox", better known as the Workshops at Wildacres. We're fortunate to have use of the fabulous Wildacres retreat twice a year and during our time there we offer a variety of classes for you to take, plus other activities to have fun doing.

Our spring play dates are April 11 - 17 and the featured speaker for the session will be Dr. Gene LeBerge, retired professor from the University of Wisconsin. Gene taught geology and has travelled widely. He's a wonderful "story teller" and will bring to us many pictures and tales of his hobby related adventures.

The fall play dates are September 5 - 11 and the featured speaker will be Dr. Steve Chamberlain, Chairman of the Rochester Mineralogical Symposium, passionate mineral collector, author and wonderful speaker. Steve's returning to Wildacres by popular demand!

In addition to the talks given by Gene and Steve, we're offering additional chances to "play" in the classes we'll be teaching during each session. A complete listing can be found on page 8 and a registration form on page 10 at EFMLS News -- February, 2011. <http://www.amfed.org/EFMLS/effeb11.pdf>.

Cost for either session is \$350 per person. This includes lodging in comfortable "motel style" rooms, excellent meals during the week and gratuity for the retreat staff (grounds keepers, kitchen staff, maintenance folks etc.). You will also be asked to pay a materials fee for whatever class or classes you take during the week.

Each session has an auction, field trip, tail gate, and most important - time to sit and talk with friends -- both new and old -- who are with you at Wildacres. So now the ball is in your court. Do plan on coming to play in the EFMLS sandbox this year.

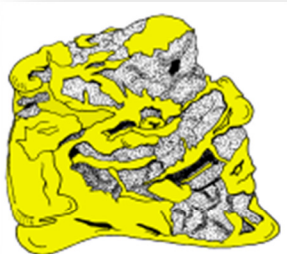
**EFMLS News -- February, 2011**

## MINERALS USED IN MEDICINE

Darryl Powell

Scientists and doctors have discovered that minerals and the elements in minerals can be used to treat sicknesses. Did you know that the mineral sphalerite is used to make diaper rash ointment? Have you ever broken a bone? Gypsum is needed to make the cast that holds the bone in place. Here are some minerals that are needed in the field of medicine.

**Gold** Gold is used to make some special drugs that fight against certain types of cancer. Gold is also used by dentists to cover weak or broken teeth. Ask your parents or grandparents if they have a tooth



covered with gold. Maybe they'll let you see it!

**Sphalerite** Sphalerite contains the element zinc. The zinc is removed from the sphalerite and is then combined with oxygen to make zinc oxide. Zinc oxide is the white cream some people use at the beach to protect their noses from a bad sunburn. It is also used to prevent some skin problems like minor burns and cuts. Zinc oxide is rubbed on babies' bottoms to soothe diaper rash. Left:



fluorite cubes on deep red sphalerite.

**Bismuth** Native bismuth is found in nature, but rarely. It is also found mixed in ores of other metals. Bismuth is used to make medicines that are good for stomach troubles. Some bismuth medicines are used to treat ulcers (an ulcer is an open sore in the stomach). You may have bismuth medicine in your home right now. Have you ever used Pepto-Bismol for an upset stomach? It contains bismuth.

**Gypsum** Recently our friend, Zoe, fell and broke her arm. The doctor fixed the broken bone and then put her arm in a cast while the bone grew back together. The cast was made of strips of bandage that were soaked in wet plaster. The plaster dried and hardened and made a nice, firm cast that held her arm in place. Plaster is made from the mineral gypsum. By the way, Zoe's arm is as good as new! Thank you, gypsum.



**Kaolinite** Kaolinite is a mineral that belongs to a group of minerals called clay minerals. Kaolinite itself does not treat any infection or illness. However, it is sometimes added to skin lotions because it is very soft and breaks up easily. It helps to make a lotion thicker. It is also used to thicken up medicines that you have to swallow. This can make the medicines easier to swallow.

**Cinnabar** Cinnabar contains the element mercury. Mercury is the only metal that is a liquid at room temperature. When it gets warmer it expands. Older thermometers contain mercury. Modern thermometers, however, are electronic and don't use mercury. Ask your parents or grandparents if they still have an old-fashioned mercury thermometer.

## THE ANCIENT CAROLINIANS CVGMC DEMONSTRATION

February 26, 2011 from 11 am to 3 pm  
243 Third Ave. NE, Hickory, NC  
Catawba Science Center

More than 12,000 years ago  
the ancestors of today's Native Americans  
came to North Carolina and thrived



Explore the lives of  
these early civilizations

CVGMC Demonstration, Feb 26, 11 - 3



Be an archaeologist,  
uncover artifacts  
and search for clues



Learn about hunter-  
gatherers and peruse  
pots, bowls & baskets

January 15 — May 1 • Carpenter Hall



243 Third Ave. NE • Hickory  
(828) 322-8169 • CatawbaScience.org

First Class Mail



# TAR HEEL ROCKHOUND

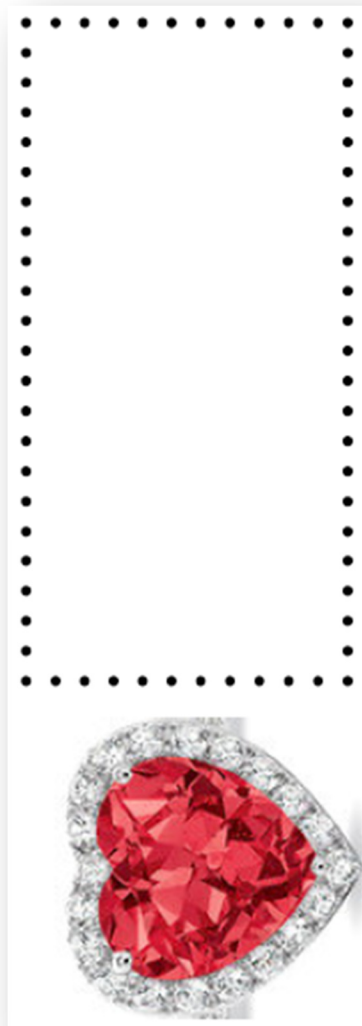
**Official Publication of**

**CATAWBA VALLEY  
GEM AND MINERAL CLUB, INC.**

**Volume 40    Number 2**

**Club Meeting  
Tuesday  
February 8, 2011  
7:00 PM**

**St Aloysius Catholic Church  
921 2nd St NE  
Hickory, NC**



***Tar Heel Rockhound***  
Velda McLean, Editor  
Post Office Box 2521  
Hickory, North Carolina 28603-2521  
<http://www.cvgmc.com/>