

TAR HEEL



ROCKHOUND

FEBRUARY 2010

## CATAWBA VALLEY GEM AND MINERAL CLUB, INC.

### 2010 OFFICERS AND COMMITTEES

President:	Tom Winslow 800-589-4619	Editor:	Velda McLean 828-757-8814	Show Chairmen:	George Max 828-328-9107
Vice President:	Baxter Leonard	Field Trip:	Harry Polly		Baxter Leonard
Treasurer:	Zan Ritchie 828-495-8456	Education:	Glenn Bolick	Scholarship:	George Max 828-328-9107
Secretary:	Jean Moran 828-638-8408				

Club Address: PO Box 2521, Hickory, NC 28603-2521  
 Regular Meetings: Second Tuesday, 7:00 PM  
 St Aloysius Catholic Church  
 921 2<sup>nd</sup> St NE Hickory, NC  
 Annual Dues: Family, \$18; Individual, \$12; Junior, \$6

The purpose of the Club is to increase the individual's knowledge of the earth sciences and to aid in the development of lapidary and related arts and skills; to promote fellowship and exchange of ideas; to hold exhibitions, contests, lectures and demonstrations for educational purposes; to help interest more people in the gem and mineral hobby; and to capture and preserve the beauty of nature, the arts, and the works of man.

### *I Held a Jewel* *a poem by Emily Dickinson*

*I held a jewel in my fingers  
 And went to sleep*

*The day was warm,  
 and winds were prosy  
 I said, "I will keep"*

*I woke - and chide my honest fingers,  
 The Gem was gone*

*And now, an Amethyst remembrance  
 Is all I own*



### INSIDE

President's Message-----	2
Minutes-----	2
Program-----	3
Field Trip-----	3
Gem Show-----	3
Help Wanted-----	3
Things to Consider When Doing an Exhibit-----	4
EFMLS Annual Convention-----	4
Gem Show Flyer-----	4
Dues are Due-----	4
Mini Miners Monthly-----	5

Velda McLean, Editor  
 3121 Blue Creek Road  
 Lenoir, NC 28645  
 828-757-8814  
[velmail@bellsouth.net](mailto:velmail@bellsouth.net)

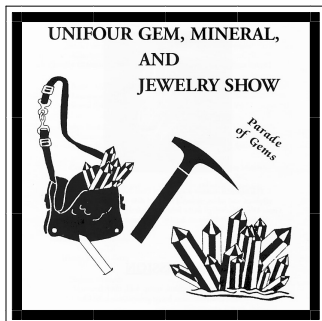
## RAMBLINGS FROM THE PREZ

Tom Winslow, Club President



Well, I don't know about the rest of you folks but as for me, I'm just plain tired of bad weather. It's very difficult to go Rockhounding in the rain or, for that matter, digging through the snow and ice. I am really looking forward to spring-time and opportunities to participate in a few rock digs. Although, I will admit that one of my most successful arrowhead hunts was during a constant rain in a freshly plowed tobacco field. So far, my best rock hunts has been at the Hickory flea market.

I am looking forward to our 2010 Catawba Valley Gem and Mineral Club show. Putting on a successful show will require a good effort by all club members. I hope that everyone will try to do their part. Last year some of us suffered grievously moving the last load of tables and displays from the Civic Center to the trailer at Lenoir Rhyne College. Everyone abandoned us – vanished!



Since our last meeting I have been experimenting with FaceBook. I have started setting up a Catawba Valley Gem and Mineral Club FaceBook page. At this time there is not much there except for some photos from the Kentucky geode hunt, the Catawba Valley Gem and Mineral Club logo, and some basic information about the club taken from the newsletter. Those members who currently have accounts on FaceBook can search on 'Catawba' and find the page. Go to the Catawba Valley Gem and Mineral Club FaceBook page, look it over, leave your comments and recommendations. I have found that FaceBook can be a very effective way of getting out a message. Also, I was surprised to discover that quite a few Catawba Valley Gem and Mineral Club members are already on FaceBook. If you have never looked at FaceBook give it a try. It is very interesting, informative, and fun. Hey, it's not just for the kids anymore. It's for old folks, young folks, clubs, businesses, causes, and politics. And it's free!

<http://www.facebook.com/>



Thomas Winslow  
The Catawba Trader  
2843 Devonshire Rd  
Newton, NC 28658-9799  
(800) 589-4619 voice  
(800) 868-0394 fax

## CATAWBA VALLEY GEM AND MINERAL CLUB, INC

Minutes, January 12, 2010

Tom Winslow called the meeting to order at 7: PM. The December 2009 Minutes were approved. The sign in sheet and *Maps of the Geology of Hickory* were passed out.

**Treasurer's Report:** Our checking account stands at \$10,137.38. \$537.25 was from the December 2009 Annual Auction.

**Membership:** Members were asked to fill out a new membership application form every year and send to Zan Ritchie or the club address with a check so that any changes in member information can be changed on the roster

**Show Committee Report:** *The Grab Bag Fill* will be on January 23 at 9:AM in the Meyers Science Building on the Lenoir-Rhyne College Campus.

Special exhibits for the gem show were discussed.

Our show date this year will be March 19, 20 & 21st 2010.

Our mineral exhibits will remain at the Science Center until February 1<sup>st</sup>.

**Education Committee Report:** Glenn Bolick had 102 students at Elizabeth Elementary in Shelby and had a request for another class at Snow Creek Elementary on February 12th for 3rd to 6th graders.

**Building Committee Report:** There was a brief discussion about purchasing a club building, Albert Keiser Albert Jr. is going to check out a few suggestions

**Website Update:** A suggestion was made to have a Website or Facebook account for the club

**February Program:** The Past President of the Charlotte Club, Jimmy Strickland will be doing a program on *Rocks You Don't Want to Lick Or Carry in Your Pocket* at our next meeting.

**Old Business:** There was nor old business.

**New Business:** There was no new business.

**Donations:** We are on the *New Best Friends List* of the Colburn Museum in Asheville because of our \$500.00 donation last year.

The Eastern Federation Scholarship Fund acknowledged our memorial donation in honor of Evelyn Bernesser .

The business meeting was adjourned and Baxter Leonard presided over the *Bragging Rock Contest*.

### Bragging Rock Contest

**Best Found** - Sapphire by John Oczkowski

**Best Purchased** - Color change Corundum from Burma by Mike Weist

**Best Made** - Chrysolla Necklace and Earrings by Betty Hollar

The program ended at 8:06 PM

Respectfully submitted,

Jean Moran, Club Secretary

## FEBRUARY PROGRAM

### Rocks You Won't Want to Lick or Carry Around in Your Pocket



Tom Winslow, Club President  
Jimmy Strickland, Past President of the Charlotte Gem & Mineral Club and current Geode Chair will present the program.

The presenter, Jimmy Strickland, will be using material from the Davidson Collection, including gummite and other glow in the dark materials from Spruce Pine.

Jimmy Strickland is in his 60's and has been in some form of rock hounding over thirty years. He has been a member of the Charlotte Gem & Mineral Club since the early eighties, has held a number of offices including president and is still on the board. He was a paramedic in Charlotte for ten years. He took up faceting after retiring because of injury (can't pick up big rocks anymore) then worked for Science Hobbies until they closed. He started at Discovery Place working in Collections Department doing work with their minerals. Jimmy worked over three years on one old and very large collection from Davidson college. This is where I really had to learn my minerals and where the information and material for my talk will be coming from. He is now in the process of photographing the entire collections for DP which has kept him busy for past year. Jimmy is married thirty-six years, no children, but lots of grandnieces and nephews to get started as pebble pups. He has been doing talks to school groups and teaching classes for Discovery Place all on rocks and minerals.

### FIELD TRIP

Harry Polly, Field Trip Coordinator

This is February and time for our annual trip to Bower's Farm for Limonite. We will be going on the 20th. This is one week later than usual. We will meet in the Rose's parking lot on Hwy 70 East at 8:00 AM. This is located just off of I-40 at exit 123. We will be traveling south on 321 to Lincolnton. We can meet again further south for those that live that way. Please let me know if that is your desire. Call or e-mail me to let me know. You will need digging tools: shovel, mattock, trowel, screwdriver, bucket, food, water, raingear. There will be a hike over uneven terrain of about 1/4 mile. There is a \$5.00 digging fee. The digging is fairly easy this time of year, but it can be very muddy at times. Please prepare for inclement weather. We will not go if it is raining or freezing. Any questions, please call me.



**Harry**

## GEM SHOW

George Max, Show Chairman

March 19-21 marks the 40th annual Gem, Mineral, Bead, Fossil and Jewelry Show of the Catawba Valley Gem and Mineral Club. We share with the larger community the excitement and lore of our hobby. We gather to learn, share, work and make purchases.

The theme of this show is a look at the vast history of mining in North Carolina.

We will have some special exhibits but we also need member participation by providing exhibits. In this economy, we need to encourage people to visit the show to see what is available. The show committee needs help with setup, ticket sales, demonstrations and take down. Examine your time schedule and sign up to help at the February meeting.

See you there, George Max, Show Chairman



---

### HELP WANTED

---

Club members who can exhibit at the show. An Exhibit Application is enclosed with the newsletter. If you have questions concerning exhibits you may direct them to George Max, Exhibit Chair at (828) 328-9107.

---

### OPPORTUNITIES

---

To help during the show: Ticket Sales, Grab bag sales, Demonstrations (**especially this**). Sign-up sheets will be available at the meeting or contact George Max or Baxter Leonard, Show Chairmen.

---

### NEEDED

---

Help is needed with set up and break down for the show. Set up will begin at on Thursday, March 18th. Breakdown will be on Sunday, March 21st after 5:00 PM.

## THINGS TO CONSIDER WHEN DOING AN EXHIBIT

George Max, Show Chairman

1. Do you have a collection that you think others would be excited to view and appreciate?
2. Can you focus it on a certain size, theme, style or educational topic?
3. Consider the size of the display case and show appropriate numbers of items with proper balance.
4. Make uniform labels that clarify or educate but do not distract from the display itself.
5. Make certain the display items are clean and the glass and inside of the case are also clean

**FORTIETH ANNUAL  
UNIFOUR GEM, MINERAL,  
AND  
JEWELRY SHOW**

*Parade  
of Gems*



**MARCH 19, 20, 21, 2010**  
**HOURS** Fri. 9:00 a.m. till 6:00 p.m.  
Sat. 9:00 a.m. till 6:00 p.m.  
Sun. 9:00 a.m. till 5:00 p.m.

Exit 125, I-40 next to Interstate  
(Just off I-40 with entrances from  
Lenoir Rhyne Boulevard and Highway 70)

**PLACE: HICKLRY METRO CONVENTION CENTER**  
**Hosted by: CATAWBA VALLEY GEM & MINERAL CLUB, INC.**

## EFMLS ANNUAL CONVENTION

**MARCH 5, 6, 7, 2010**

**Stanton  
(Newark/Christiana)  
Delaware**

## DUES ARE DUE BY FEBRUARY 28TH

The deadline for current members to pay dues is **February 28<sup>th</sup>**. Dues must be accompanied by the **Membership Form** in order to keep all information current. Our Membership Roster is compiled according to these forms. If you have lost your form, you may request one from any of our officers and they will see that you get one before the deadline. The reason for the deadline is to register our membership with the Eastern Federation's deadline for insurance purposes.

MUCH work goes into the annual gem show in March. Our members who contribute their time behind the scenes are very busy running the show and are not equipped to receive dues at the show. Much confusion has been a result in the past when members hand off their dues to a worker at the show, therefore resulting in names not getting on the roster and mailing list. Entrance to the show is free to members who have paid their 2010 dues. **Please be considerate and mail the dues in with the membership form before the deadline.** Thank you.

# MINI MINERS MONTHLY

Vol. 4 No. 1

January 2010

## WHAT IS A FOSSIL?

**Definition:** A fossil is the remains of a living organism or of the movement of a living organism that have been preserved in the rock record.

The word "fossil" is from the Latin word "fossus" which means "having been dug up."

Most fossils are found in sedimentary rocks like limestone, dolostone, coal and sandstone. Rarely fossils are found in metamorphic rocks and some extremely rare fossils are found in igneous rocks.

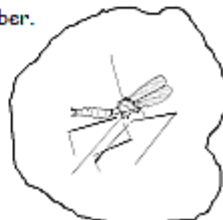
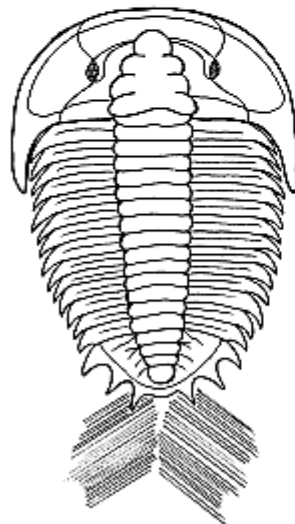
A scientist who studies fossils is called a paleontologist.

### Types of Fossils

There are two big categories of fossils.

A body fossil is a fossil of the remains, or a piece of the remains, of the body of an organism. Some fossils are as tiny as microscopic bacteria and some are as large as dinosaurs. A trace fossil is a fossil of the tracks, footprints and other marks made by an organism. Here is a picture of a Trilobite (body fossil) and marks left by its feet (trace fossil). The trace fossil made by a trilobite is called *cruziana*.

Below are the fossilized remains of insects in Baltic amber. The lower one is a crane fly. The other is a specimen of two ants and air bubbles. Notice that the crane fly pulled its own legs off trying to get free from the sticky sap that would later become amber.



A paleontologist learns to interpret fossils and tell the story of what was happening in the organism's life. What did they eat? How did they move? What other organisms did they live with?

## Mineral Jokes

Q: What do you get when you drop a piano down a mineshaft?

A: A Flat Miner (get it????!!)

Q: Mr. Sapphire married Miss Ruby and they moved into their first

home. What was it called?

A: A corundinium. (Thanks to Jim Brace-Thompson for this "gem")

Q: Diamond Dan was very sick one day. He just didn't want to eat anything at all. Why?

A: Because he lost his ... wait for it ... wait for it ... his APATITE!

Q: Where were the calcite crystals taking a nap?

A: In the bedrock, of course!

Q: Did you hear what Corundum Carl gave his wife for Valentine's Day?

A: You guessed it, a dozen Barite Roses

[www.diamondpublications.net](http://www.diamondpublications.net)



©2010 Diamond Dan Publications. All pictures and articles in this newsletter are property of Diamond Dan Publications and cannot be copied or reused in any format (printed or electronic) without written permission of Diamond Dan Publications, P.O. Box 143, Manchester, New York 14504 or [diamonddan@rochester.rr.com](mailto:diamonddan@rochester.rr.com). Subscriptions: 12 issues (1 year) \$29.95. 24 issues (2 years) \$66.95. Electronic subscription (PDF) \$9.95 for 12 issues. Make checks payable to Diamond Dan Publications.

DIAMOND DAN  
PUBLICATIONS

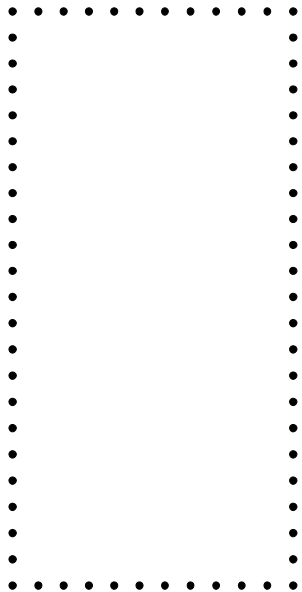
P.O. Box 143  
Manchester, New York 14504

**TAR HEEL ROCKHOUND**

Velda McLean, Editor  
Post Office Box 2521  
Hickory, North Carolina 28603-2521

e-mail: [velmail@bellsouth.net](mailto:velmail@bellsouth.net)

First Class Mail



# TAR HEEL ROCKHOUND

**Official Publication of Catawba  
Valley Gem and Mineral Club, Inc.**

**Volume 39 Number 2**

**Club Meeting**

**Tuesday  
February 9, 2010  
7:00 PM**

**St Aloysius Catholic Church  
921 2<sup>nd</sup> St NE  
Hickory, NC**

**EXHIBIT APPLICATION**  
**UNIFOUR GEM, MINERAL, AND JEWELRY SHOW**  
**MARCH 19, 20, 21 2010**  
**HICKORY METRO CONVENTION CENTER**

Exhibits of minerals, fossils or gemstones are one way we can help to educate ourselves and the general public about our hobby. That is one of the main purposes of the Club. Hopefully many of you will choose to participate in this joint activity. To encourage this, the club awards four trophy plaques each year. They are:

**MOST BEAUTIFUL**  
**MOST INTERESTING**  
**MOST EDUCATIONAL**  
**BEST FIRST TIME EXHIBIT**  
**BEST GUEST CLUB EXHIBIT**

In order to better plan for the show, please fill out this form and return it to Dr. George Max, Exhibits Chair, % Catawba Valley Gem & Mineral Club, P.O. Box 2521, Hickory, NC, 28603-2521; or 2020 13<sup>th</sup> Street NE, Hickory, NC, 28601. Please respond by March 1, 2010.

**DESCRIPTION OF EXHIBIT:** \_\_\_\_\_

**CASE REQUIREMENTS:**

\_\_\_\_\_ I / We will furnish a case of the following dimensions: W \_\_\_\_\_ D \_\_\_\_\_ H \_\_\_\_\_

\_\_\_\_\_ I / We will need a club case. Please circle preference:

**Regular**    40" W X 19" D X 22" H  
**Larger**     48" W X 24" D X 24" H

**INSTALLATION AND REMOVAL:**

The exhibit should be set up by Thursday, March 18, 2010 between 4PM and 9PM, and removed at the end of the show at 5PM, Sunday, March 21, 2010. If you are unable to meet this schedule, please contact the Exhibits Chair about making other arrangements.

**SECURITY AND LIABILITY:**

Professional security will be provided around the clock, beginning at 4PM on Thursday and ending at 7PM on Sunday. The Catawba Valley Gem & Mineral Club will take all reasonable precautions to protect property and person of each exhibitor, however, it is mutually agreed that Catawba Valley Gem & Mineral Club, Inc, or its members shall not be liable for any damage to or the loss of any exhibit. This includes the property of the exhibitor or injury to his/her person resulting from any cause. All claims for any such damage, loss or injury are expressly waived by the exhibitor. Submission of the signed application for exhibitor's space constitutes acceptance of ALL the rules and regulations as outlined herein and releases the Catawba Valley Gem & Mineral Club, Inc., or its members from all liability as outlined above.

\_\_\_\_\_  
**Signature of Exhibitor**

\_\_\_\_\_  
**Date**